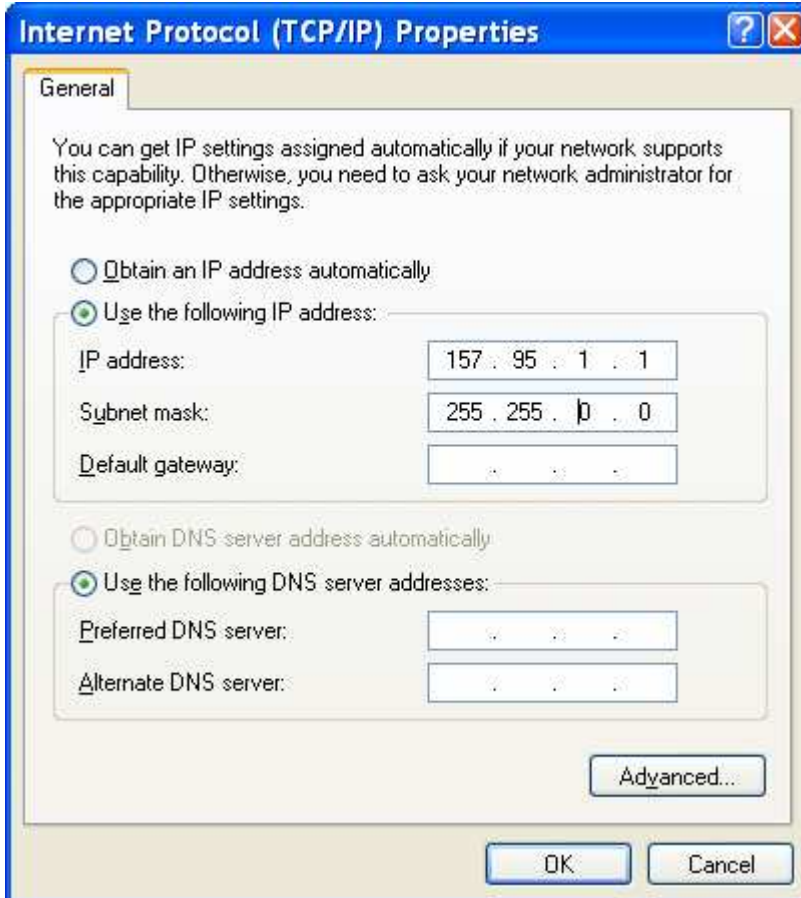
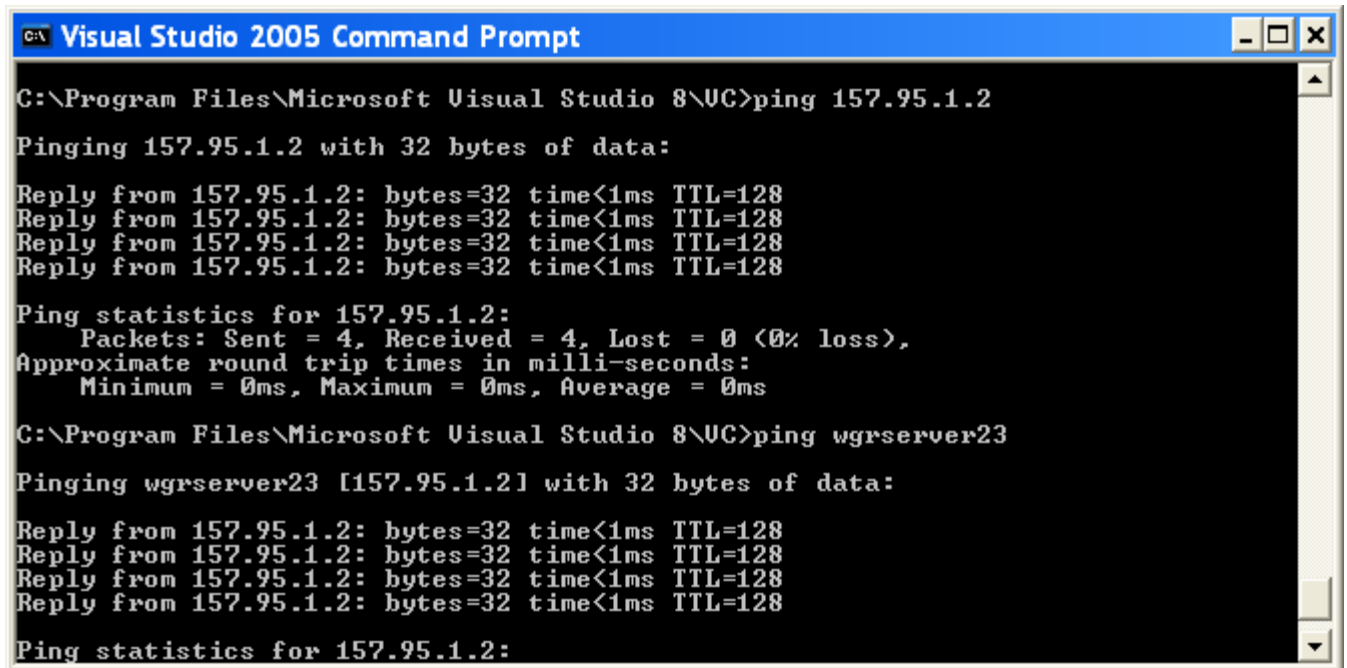


Connecting Laptop to WGR server

1. Each server is setup with fixed static IP address 157.95.1.2. If not make sure it is, in case you need to use VNC.
2. Now set the fixed IP address (157.95.1.1) for the laptop that needs to be connected to the wgr server.



3. Now connect the laptop to the server using network cable.
4. To make sure laptop can see the wgr server trying Ping 157.95.1.2 from Cmd prompt as below



```
C:\Program Files\Microsoft Visual Studio 8\VC>ping 157.95.1.2

Pinging 157.95.1.2 with 32 bytes of data:

Reply from 157.95.1.2: bytes=32 time<1ms TTL=128
Reply from 157.95.1.2: bytes=32 time<1ms TTL=128
Reply from 157.95.1.2: bytes=32 time<1ms TTL=128
Reply from 157.95.1.2: bytes=32 time<1ms TTL=128

Ping statistics for 157.95.1.2:
    Packets: Sent = 4, Received = 4, Lost = 0 (0% loss),
    Approximate round trip times in milli-seconds:
        Minimum = 0ms, Maximum = 0ms, Average = 0ms

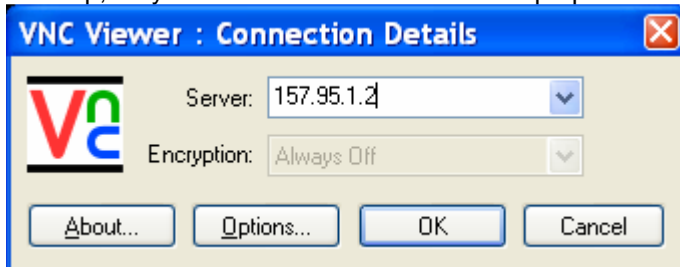
C:\Program Files\Microsoft Visual Studio 8\VC>ping wgrserver23

Pinging wgrserver23 [157.95.1.21] with 32 bytes of data:

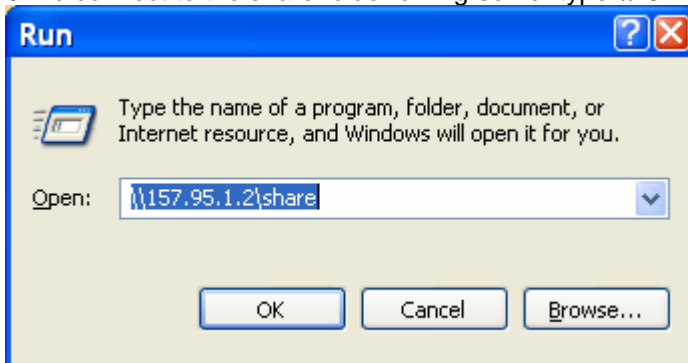
Reply from 157.95.1.2: bytes=32 time<1ms TTL=128
Reply from 157.95.1.2: bytes=32 time<1ms TTL=128
Reply from 157.95.1.2: bytes=32 time<1ms TTL=128
Reply from 157.95.1.2: bytes=32 time<1ms TTL=128

Ping statistics for 157.95.1.2:
```

5. If step 4 works fine, then go to IE browser and type the <http://157.95.1.2/default.aspx>. This should bring up the web pages running in wgr server.
6. You can also use machine name to browse to the servers as <http://WGRServer21/default.aspx>. Each of the demo machines has been named from wgrserver21,wgrserver22,wgrserver23,wgrserver24,wgrserver25. It is written on the bottom of the server box.
7. VNCServer is running on each of these server box. So at any time if user wants to open desktop, they can use VNCViewer on their laptop as below

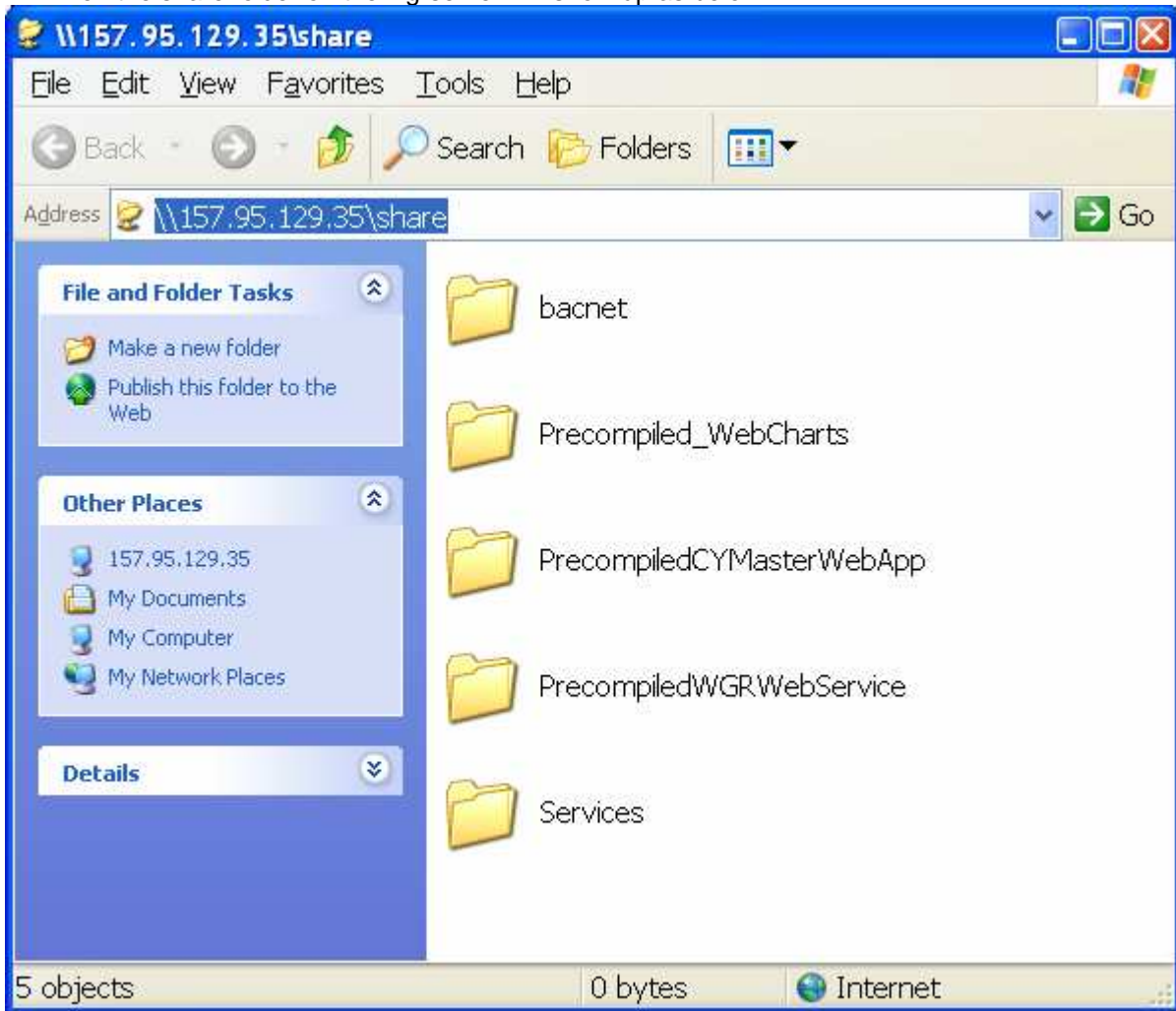


8. Every server has c:\share folder that is shared to copy the files between the servers. Or user can also use flash drive to copy the files if any to the wgr server.
9. To connect to the share folder on wgrserver type \\157.95.1.2\share on program-Run as below



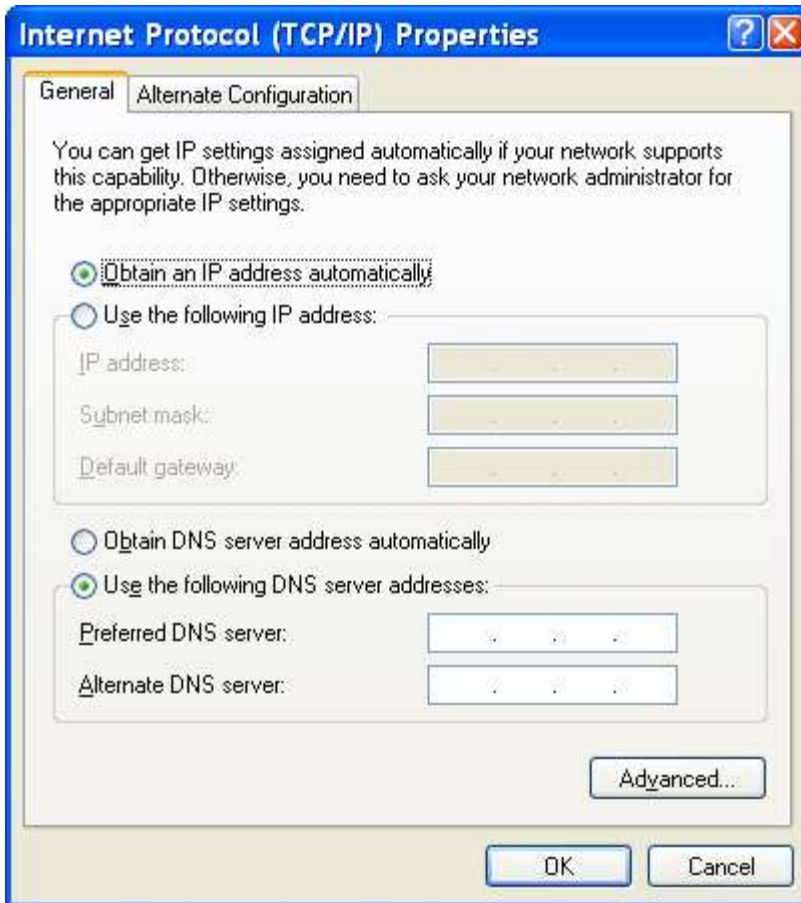
10. Login prompt screen will pop-up after this. Here type Login - wgruser, password - systems

11. Then the share folder on the wgrserver will show up as below



12. Now user can copy any files from laptop to the wgrserver and then using VNCViewer desktop sharing user can move the files inside wgrserver.

13. Remember to change laptop's static address to dynamic one after all the operation is done, else laptop can't go to the internet -



14. For SMS testing make sure SMS modem AT&T 87U is connected to the wgrserver in the usb port.

15. Then open 3Gwatcher program



16. Once the device is detected SMS testing can be done. using basic SMS command. Type modem phone number then the command 4085135192

?? - help

?TR?1 - transmit reading for node 1

?AS?1 - Node status for nodeid 1

?AR?1 reset alarm for nodeid 1

To upgrade the server software

1. Copy the serverupgrade.zip file to wgr server under c:\share folder
2. Unzip the the files
3. Go to **..serverupgrade\batfiles**. Execute Upgradeserver.cmd. This will stop the services, copy the latest files, upgrade the DB table
4. Now you can open the web page and do all the configuration and so on.
5. Make sure that product is setup for the device display correctly. To set this up go to admin.aspx page.